



Mortar Catch®

Mortar Catch® | 2 inch or larger masonry cavity wall

DESCRIPTION

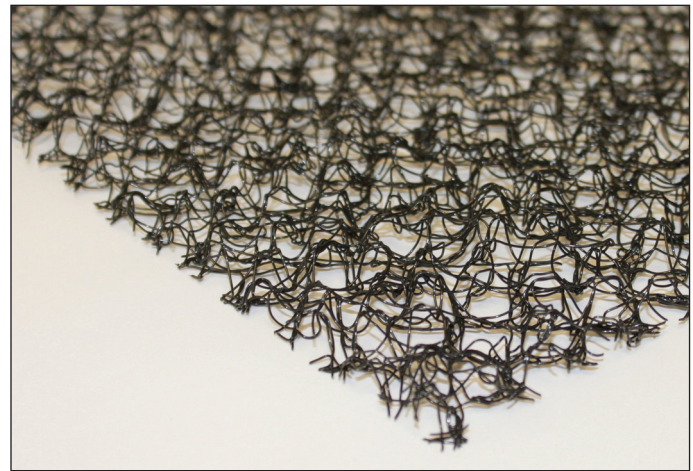
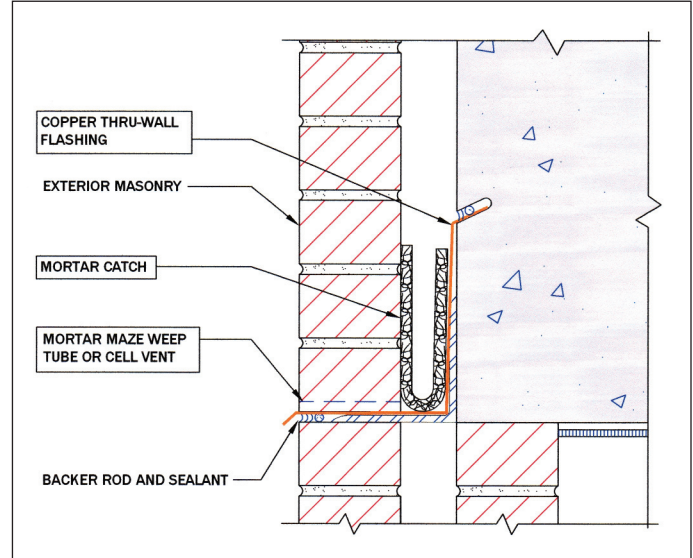
The Mortar Catch® mortar deflection mat works in conjunction with our masonry flashing and weep vents as a complete and effective moisture management system. Mortar Catch® is designed for use at all flashing locations where wide cavity (greater than 2 inches) construction is required. The open mesh geomatrix design, when shaped in a “U” configuration on the job site, fills the entire cavity to prevent mortar droppings from blocking and clogging base wall and head joint drainage channels. This allows moisture within the cavity to seep down the flashing and out of the wall.

APPLICATIONS

- » For all cavity wall flashing locations including the base of the wall, above windows and doors, steel lintels, spandrels and shelf angles, or at any other penetrations or obstructions.
- » Mortar Catch® should be used with masonry through-wall flashing systems and weep vents from Advanced Building Products to provide a complete masonry moisture management system.

BENEFITS

- » Deflects and suspends mortar droppings allowing moisture to drain from the wall assembly
- » Greater airflow and drainage compared to most plastic mesh based products
- » Lightweight & easy to install. No mechanical fastening required
- » Made from 40% recycled content, contributes to LEED points
- » Able to withstand extreme temperatures
- » Available in 10, 20, and 39 inch widths / 100 ft. roll



PHYSICAL DATA	Mortar Catch® 351	Mortar Catch® 352	Mortar Catch® 353
Core Material	Nylon 6	Nylon 6	Nylon 6
Thickness	0.40 in. (10mm)	0.40 in. (10mm)	0.40 in. (10mm)
Roll Weight	5 lbs. (2.27 kg)	10.0 lbs. (4.54 kg)	19.5 lbs. (8.85 kg)
Length	100 ft. (30.38 m)	100 ft. (30.38 m)	100 ft. (30.38 m)
Width	10 in. (25.40 cm)	20 in. (50.80 cm)	39 in. (99.06 cm)



ADVANCED BUILDING PRODUCTS INC.

Phone: 800-252-2306
Fax: 207-490-2998
info@advancedflashing.com
www.advancedflashing.com

