



ABP AdvancedDrain®

Prefabricated Composite Drain .25

Description

ABP AdvancedDrain® .25 is a 0.25 inch thick drainage composite consisting of parallel geometric drainage channels backed with a nonwoven filter fabric on one or both sides of the drain that are designed to eliminate hydrostatic pressure from behind below grade foundation walls, retaining walls, planters and plaza decks.

The product is produced from an extruded polymer matrix of tangled randomly oriented monofilaments. The polymer matrix is then shaped into a series of parallel porous channels designed to allow flow in all directions, and then attached (heat bonded) to a polyester nonwoven filter fabric on one or both sides of the drain designed to prevent soil from entering the matrix of the system while providing ample flow of water.

Applications

- Commercial and Residential foundation walls
- Retaining walls
- Planters
- Plaza decks and walls

Features and Benefits

Filtration and drainage in one package.

Lightweight, easy to handle and install.

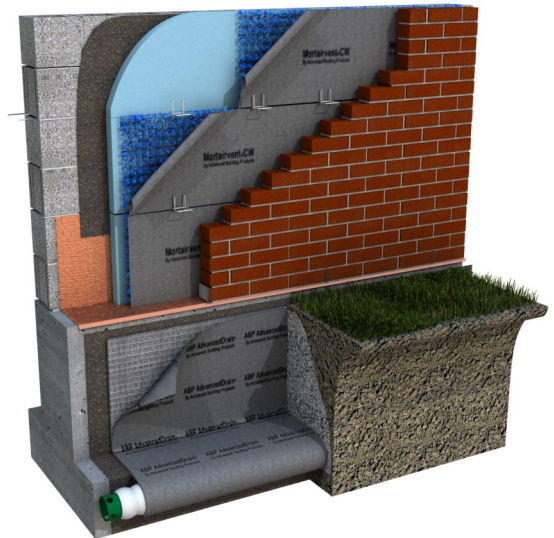
Installation in either vertical or horizontal direction.

Simple installation with either construction adhesive or termination bar.

Sufficient alternating fabric overlap for sealing adjacent panels with construction adhesive to prevent soil intrusion at the joints.

Polymer core resistant to most known solvents and chemicals including acids and bases.

Convenient working width and roll length.



ABP AdvancedDrain® .25

Physical Properties: ABP AdvancedDrain .25-1 (1 sided fabric)

Description	Test Method	User	Imperial	Metric
Core Weight*	ASTM D5261	45 (g/sqft)	14.3 (oz/sqyd)	485 (g/sqm)
Composite Weight*	ASTM D5261	54.3 (g/sqft)	17.2 (oz/sqyd)	585 (g/sqm)
Core Thickness*	ASTM D5199	.25 (in)	.25 (in)	.64 (cm)
Composite Thickness*	ASTM D5199	0.26 (in)	0.26 (in)	.66 (cm)
Fabric Weight*	ASTM D5261	9.3 (g/sqft)	2.9 (oz/sqyd)	100 (g/sqm)
Core width*		3.29 (ft)	39.5 (in)	100.3 (cm)
Fabric Overlap*		3 (in)	3 (in)	7.6 (cm)

Core Polymer	Polypropylene
Filter Fabric Polymer	Polyester

Flow Rates: ABP AdvancedDrain .25-1 (1 sided fabric)

Soil Depth	Wall Pressure (psf)*	Sandy Soil Seepage (gal/min/ft)*	Silty Soil Seepage (gal/min/ft)*	Clay Soil Seepage (gal/min/ft)*	Drain Flow Capacity (gal/min/ft)*	Minimum Safety Factor
10	500	0.15	0.015	0.0015	12.2	81
15	750	0.22	0.022	0.0022	11.5	52
20	1000	0.29	0.029	0.0029	10.5	36
30	1500	0.43	0.043	0.0043	8.4	19
40	2000	0.62	0.063	0.0063	3.3	5

Physical Properties: ABP AdvancedDrain .25-2 (2 sided fabric)

Description	Test Method	User	Imperial	Metric
Core Weight*	ASTM D5261	45 (g/sqft)	14.3 (oz/sqyd)	485 (g/sqm)
Composite Weight*	ASTM D5261	63.6 (g/sqft)	20.1 (oz/sqyd)	685 (g/sqm)
Core Thickness*	ASTM D5199	.25 (in)	.25 (in)	.64 (cm)
Composite Thickness*	ASTM D5199	0.255 (in)	0.26 (in)	.649 (cm)
Fabric Weight*	ASTM D5261	18.6 (g/sqft)	5.8 (oz/sqyd)	200 (g/sqm)
Core width*		3.29 (ft)	39.5 (in)	100.3 (cm)
Fabric Overlap*		3 (in)	3 (in)	7.6 (cm)

Core Polymer	Polypropylene
Filter Fabric Polymer	Polyester

Flow Rates: ABP AdvancedDrain .25-2 (2 sided fabric)

Soil Depth	Wall Pressure (psf)*	Sandy Soil Seepage (gal/min/ft)*	Silty Soil Seepage (gal/min/ft)*	Clay Soil Seepage (gal/min/ft)*	Drain Flow Capacity (gal/min/ft)*	Minimum Safety Factor
10	500	0.15	0.015	0.0015	9.3	62
15	750	0.22	0.022	0.0022	9.1	41
20	1000	0.29	0.029	0.0029	8.9	31
30	1500	0.43	0.043	0.0043	8.6	20
40	2000	0.62	0.063	0.0063	8.3	13

Packaging

ABP AdvancedDrain .25-1 (1 sided fabric)

Core Width (in)*	39.5	Roll Length (ft)*	135
Roll Area min (sqf)	445	Roll weight (lbs)*	54

ABP AdvancedDrain .25-2 (2 sided fabric)

Core Width (in)*	39.5	Roll Length (ft)*	135
Roll Area min (sqf)	445	Roll weight (lbs)*	63

Advanced Building Products, Inc.
P.O. Box 98
Springvale, ME 04083
www.advancedbuildingproducts.com



Toll Free: 800-252-2306
Fax: 207-490-2998