



## ABP AdvancedDrain®

### Prefabricated Composite Drain .50

#### Description

ABP AdvancedDrain® .50 is a 0.50 inch thick drainage composite consisting of waffle pattern matrix with bidirectional geometric drainage channels backed with a nonwoven filter fabric designed to eliminate hydrostatic pressure from behind below grade foundation walls, retaining walls, planters and plaza decks.

The product is produced from an extruded polymer matrix of tangled randomly oriented monofilaments. The polymer matrix is then shaped into a series of truncated square pyramids with bidirectional porous channels designed to allow flow in all directions, and then attached (heat bonded) to a polyester nonwoven filter fabric designed to prevent soil from entering the matrix of the system while providing ample flow of water.

#### Applications

- Residential foundation walls
- Retaining walls
- Planters
- Plaza decks and walls

#### Features and Benefits

Filtration and drainage in one package.

Lightweight, easy to handle and install.

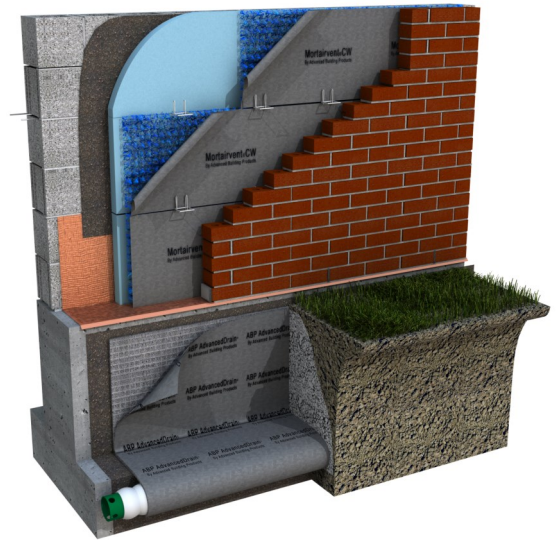
Installation in either vertical or horizontal direction.

Simple installation with either construction adhesive or termination bar.

Sufficient fabric overlap for sealing adjacent panels with construction adhesive to prevent soil intrusion at the joints.

Polymer core resistant to most known solvents and chemicals including acids and bases.

Convenient working width and roll length.





## ABP AdvancedDrain®

### Physical Properties

**Core Polymer**                      **Polypropylene**  
**Filter fabric Polymer**        **Polyester**

Description	Test Method	User	Imperial	Metric
Core Weight*	ASTM D5261	63 (g/sqft)	20 (oz/sqyd)	678 (g/sqm)
Composite Weight*	ASTM D5261	72.2 (g/sqft)	22.9 (oz/sqyd)	778 (g/sqm)
Core Thickness*	ASTM D5199	0.5 (in)	0.5 (in)	1.27 (cm)
Composite Thickness*	ASTM D5199	0.51 (in)	0.51 (in)	1.29 (cm)
Fabric Weight*	ASTM D5261	9.3 (g/sqft)	2.9 (oz/sqyd)	100 (g/sqm)
Core width*		3.29 (ft)	39.5 (in)	100.3 (cm)
Fabric Overlap*		3 (in)	3 (in)	7.6 (cm)

### Flow Rates

Soil Depth	Wall Pressure (psf)*	Sandy Soil Seepage (gal/min/ft)*	Silty Soil Seepage (gal/min/ft)*	Clay Soil Seepage (gal/min/ft)*	Drain Flow Capacity (gal/min/ft)*	Minimum Safety Factor
10	500	0.15	0.015	0.0015	28	186
15	750	0.22	0.022	0.0022	22	100
20	1000	0.29	0.029	0.0029	16	55
30	1500	0.43	0.043	0.0043	10	23
40	2000	0.62	0.063	0.0063	5	8

### Packaging

Core Width (in)\*            39.5  
 Roll Length (ft)\*            75  
 Roll Area min (sqf)        246.8  
 Roll weight (lbs)\*            40

\*Nominal values

\*\*All rolls are stretch wrapped for shipment. Roll weight includes package.