



MORTAR BREAK[®]

Mortar Deflection System

Specification Bulletin
No. 310-350
Mortar Break[®]
Mortar Break[®] II

Mortar Break[®] | Mortar Deflection System

DESCRIPTION

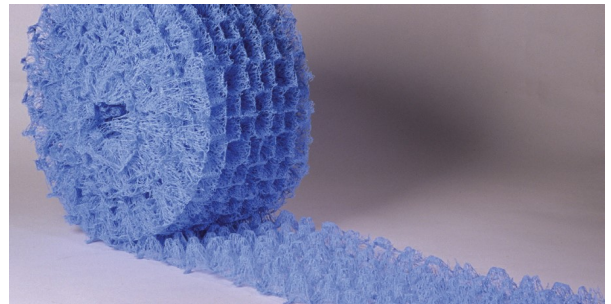
The Mortar Break[®] mortar deflection mat works in conjunction with our masonry flashing and weep vents as a complete and effective moisture management system. Mortar Break[®] is designed to prevent mortar droppings from blocking and clogging base wall and head joint drainage channels for masonry cavity wall applications. Mortar Break[®] suspends excess mortar droppings above the weep holes and allows any water trapped within the cavity to seep down the flashing and out of the wall. The system also helps to maintain an airspace for ventilation and drying of the wall cavity.

APPLICATIONS

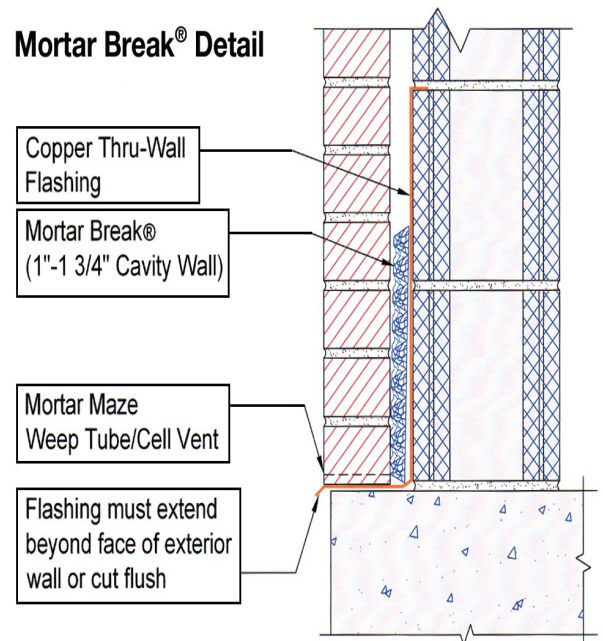
- » For all cavity wall flashing locations including the base of the wall, above windows and doors, steel lintels, spandrels and shelf angles, or at any other penetrations or obstructions.
- » Mortar Break[®] should be used with masonry through-wall flashing and weep vents from Advanced Building Products to provide a complete masonry moisture management system.

BENEFITS

- » Polypropylene matrix deflects and suspends mortar droppings allowing moisture to drain from the wall assembly.
- » Dimple design helps break up mortar droppings.
- » Greater airflow compared to most plastic mesh based products.
- » Anti-wicking material promotes enhanced drainage performance.
- » Lightweight & easy to install. No mechanical fastening required.
- » Able to withstand extreme temperatures.
- » 90% open mesh allows for proper drainage and air movement.



Mortar Break[®] Detail



PHYSICAL DATA	Mortar Break® 310	Mortar Break® 313	Mortar Break® 316	Mortar Break® 339	Mortar Break® II
Core Material	Polypropylene	Polypropylene	Polypropylene	Polypropylene	Polypropylene
Thickness	0.80 in. (20.32 mm)	0.80 in. (20.32 mm)	0.80 in. (20.32mm)	0.80 in. (20.32 mm)	1.60 in. (40.64 mm)
Roll Weight	4.50 lbs. (2.04 kg)	5.86 lbs. (2.66 kg)	7.22 lbs. (3.27 kg)	17.60 lbs. (7.98 kg)	4.0 lbs. (1.81 kg)
Length	50 ft. (15.24 m)	50 ft. (15.24 m)	50 ft. (15.24 m)	50 ft. (15.24 m)	35 ft. (10.67 m)
Width	10 in. (25.40 cm)	13 in. (33.02 cm)	16 in. (40.64 cm)	39 in. (99.06 cm)	10 in. (25.40 cm)
Rolls/Box	4	3	2	1	4
Boxes/Pallet	8	8	8	8	8
UV Exposure	30 days	30 days	30 days	30 days	30 days



ADVANCED BUILDING PRODUCTS, INC.
 Phone: 800-252-2306 Fax: 207-490-2998
 info@abp-1.com
 www.advancedbuildingproducts.com

