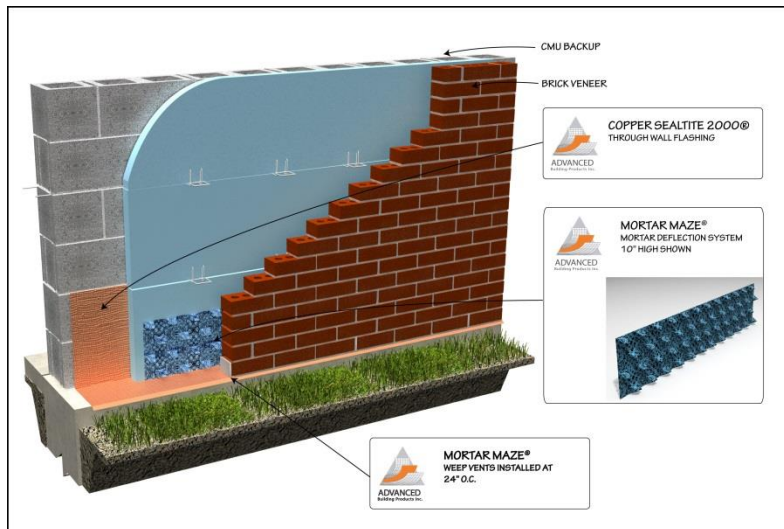


# MORTAR MAZE®

Patent Number: US 6,256,955 B1

## Installation Instructions

Mortar Maze® should be installed at all through wall flashing locations by simply placing one five foot sheet directly on top of the through wall flashing. No mechanical fasteners are necessary. Butt each five foot section of Mortar Maze up against each other. Mortar Maze can also be interlocked together to guarantee a continuous mortar deflection by locking the dimples at the end of one piece with that of the dimples on the next piece.



## ADVANCED BUILDING PRODUCTS, INC.

PHONE: 800-252-2306

FAX: 207-490-2998

[WWW.MORTARMAZE.COM](http://WWW.MORTARMAZE.COM)